

Age-related degradation of optic radiation white matter predicts visual, but not verbal executive functions

Christina E. Webb, Patricio M. Viera Perez, David A. Hoagey, Chen Gonen, Karen M. Rodrigue, Kristen M. Kennedy

Center for Vital Longevity, School of Behavioral and Brain Sciences, The University of Texas at Dallas

ABSTRACT

Healthy aging is accompanied by degraded white matter connectivity, which has been suggested to contribute to cognitive dysfunction observed in aging, especially in relation to fluid measures of cognition. Prior research linking white matter microstructure and cognition, however, has largely been limited to major association and heteromodal white matter tracts. The optic radiations (OR), which transfer visual sensory-perceptual information from thalamic lateral geniculate nucleus to primary visual cortex, are generally considered lower-level input-relay white matter tracts. However, the role of this prominent white-matter visual relay system in supporting higher-order cognition is understudied, especially in regard to healthy aging. The present study used deterministic tractography to isolate OR fractional anisotropy (FA) in 130 highly screened, healthy participants aged 20–94 years (mean 47.88 ± 17.36 SD; 76 women) to assess age effects on OR tract white matter. We also examined associations between age-related differences in the OR and cognitive domains involving visual processing speed, and visual- and non-visual executive function (EF). OR microstructure, as indexed by FA, exhibited a significant linear decrease across age. A significant interaction between age, FA, and cognitive domain on cognitive task performance indicated that in older age, more degraded OR white matter was associated with poorer visual EF, but no age-related association between FA in the OR and visual processing speed or verbal EF was observed. These findings suggest the optic radiations are not merely sensory-perceptual relays but also influence higher-order visual cognition differentially with age.

Keywords: aging, executive function, optic radiations, tractography, white matter connectivity

Correspondence: Kristen M. Kennedy, 1600 Viceroy Dr., Suite 800, Dallas, TX 75235, USA, tel: +1(972)-883-3739, email: kristen.kennedy1@utdallas.edu

Date Received: Dec 10, 2020

Date Accepted: April 12, 2022

DOI: 10.52294/ApertureNeuro.2022.2.ELXU7784

INTRODUCTION

Typical aging is accompanied by the degradation of structural white matter connections, which are essential for the propagation of neuronal signals between gray matter networks. In particular, fractional anisotropy (FA), a measure of the orientation anisotropy of diffusion, shows a negative linear association with age and is indicative of deterioration of microstructural organization. This age-related cortical disconnection is suggested to contribute to cognitive dysfunction observed in aging, especially in relation to measures of fluid cognition such as processing speed and executive function (1–5). In support of this theory, age-related performance variations in these cognitive domains are shown to be mediated by age differences in white matter properties (5–13). This evidence collectively demonstrates that age-related degradation of white matter connectivity contributes to

poorer cognitive functioning in aging; yet, empirical evidence has largely been limited to the study of major association white matter tracts that link heteromodal gray matter regions supporting higher-order cognitive functioning. Because aging of white matter typically shows an anterior-to-posterior gradient (13–17), there has been a greater focus on linking age differences in structural properties of anterior white matter to age-related variation in cognition. There has been less research, however, specifically characterizing the extent of aging effects on posterior relay white matter pathways, such as the optic radiations (ORs), that support vital sensory-perceptual processing. Moreover, it remains to be determined whether aging of this white matter influences not only performance on speeded tasks, but also more complex executive functions.

The optic radiations are large white matter bundles that originate from the lateral geniculate nucleus (LGN)

of the thalamus and extend posteriorly to connect with the primary visual cortex (18), with a loop through the temporal cortex (i.e., Meyer's loop). These radiations are responsible for the transfer of visual sensory-perceptual information and are generally thought to be lower-level input-relay tracts. White matter FA in the optic radiations has been linked to blood-oxygen-level-dependent (BOLD) activation in the visual cortex (19), and declines in OR FA can indicate visual impairment in older adults (20). While the OR facilitates the transmission of visual information from the retina, this prominent white matter visual relay system also likely influences higher-order cognitive functions. However, the association between microstructural properties of the OR and their effect on processing speed or other complex cognitive functions remains largely understudied, especially in aging. In children, lower white matter FA in the OR tracts is associated with a significant reduction in processing speed (21), suggesting that reduced white matter quality of the OR results in decreased speed at which children process information and make decisions. Bells et al. (22) further showed that degraded OR white matter microstructure is related to neural synchronization in the visual cortex, which affects cognitive performance in children and adolescents. Additional evidence indicates that individual differences in younger adults' performance on a choice reaction time task are associated with variability of FA in the OR, yet the sample size of this study was small (23). Only one study, to our knowledge, has specifically linked white matter properties of the OR with age-related differences in processing speed. Using principal component analysis (PCA), Johnson et al. (24) demonstrated that the OR were indeed sensitive to age-related differences in FA and that age mediated the association between FA and perceptual-motor speed. However, the specific relationship between OR white matter and its association with other higher-order visual and verbal cognitive functions has not been reported in healthy aging adults.

The present study sought to characterize the extent of age-related effects on FA in the OR in a lifespan sample of healthy adults. We also aimed to determine whether aging of OR white matter shows specificity in its association with visual versus non-visual, that is, verbal, cognitive performance. We hypothesized that, consistent with other major white matter tracts, OR white matter FA would decrease linearly across the age span. Second, in line with the idea that the OR acts as a visuospatial relay system supporting lower-level visual and perceptual functioning, we expected that aging of OR white matter would be related to basic visual processing speed. Age-related differences may also exist in the extent to which FA of the OR is associated with higher-order executive functions, and notably, may do so differentially across visual and verbal domains. Specifically, aging of the OR should influence performance on visual executive function (EF) tasks to a greater degree than verbal EF tasks. To address these questions, the present study utilized

diffusion tensor imaging (DTI) and deterministic tractography to isolate the OR and characterize both age effects and age-related differences in cognitive associations in a large lifespan sample of healthy adults.

METHODS

Participants

Participants included 130 cognitively normal, healthy adults sampled from across the lifespan ranging in age from 20 to 94 years (mean age = 47.88 ± 17.36 years; 54 men, 76 women; 78% Caucasian, 11% Black, 9% Hispanic/Latinx, and 1% Asian), who were recruited from the Dallas-Fort Worth Metroplex, and compensated for their time. These 130 participants met the following study inclusion criteria. Individuals expressing interest in the study first underwent an inclusion screening interview conducted by phone that asked individuals about demographic information (age, date of birth, sex, ethnicity, height, weight), previous research study participation (if participated in a similar cognitive study, they are excluded due to potential cognitive test exposure/contamination; if participated in a recent clinical trial for medications, they are excluded), whether English is a native language (excluded if learned English after the age of 6 due to not meeting the norms of the cognitive and neuropsychological tests and the potential to not perform as well due to language issues), handedness (left handers are excluded due to potential asymmetries in structural and functional imaging; left handers who were switched after the age of 4 and remain ambidextrous are excluded), education (less than high school or GED are excluded), contraindications for MRI scanning (non-paramagnetic metal inclusions in body and claustrophobia are excluded), if pregnant or trying to become pregnant are excluded (for MRI safety), and head injury with loss of consciousness (LOC) (excluded if LOC > 5 minutes and/or if diagnosed or treated for TBI). Participants are also excluded for diabetes, cancer (if treated with chemotherapy or radiation), any history of neurological disorders, any cardiovascular disease or heart problems (except murmur), psychiatric condition requiring hospitalization, diagnosed learning disability, vision or hearing problems (cataracts, glaucoma, colorblindness, macular degeneration are excluded, cataracts included if test at normal visual acuity at study entry, same for hearing aids). Interview also included open-ended questions about previous surgeries, other health conditions not previously mentioned, and if interested in the PET portion of the study, questions about allergies to pharmaceuticals and history of liver problems. If interested individuals pass the phone screening, they are mailed a health questionnaire packet containing a list of further questions totaling seven pages, a depression screening tool, and a more detailed metal screening questionnaire for MRI

safety. Individuals passing these inclusion criteria enter the study provisionally and on first visit provide written consent, are tested for visual and hearing acuity, administered the Mini-Mental State Exam (MMSE) and brachial blood pressure is measured. Participants scoring < 26 on the MMSE, testing below corrected speech range frequency, or corrected visual acuity 20/50 or poorer, or have uncontrolled, unmedicated hypertension are further excluded from participation in the study. Visual acuity of the sample included $N = 120$ participants testing at 20/30 or better, $N = 7$ individuals testing at 20/40, and $N = 3$ individuals at 20/50. Including visual acuity (unit-weighted composite z-score of near and far acuity) as a covariate in final analyses did not change the pattern of results. All participants had an MMSE (25) score of at least 26, and a Center for Epidemiological Studies Depression (CES-D) (26) score of 16 or lower to exclude participants demonstrating indications of dementia or depression, respectively. Table 1 reports participant demographics, as well as cognitive composite scores and mean OR FA, separated by arbitrary age group; all analyses treated age as a continuous variable. Table 1 and Figure 1B illustrate that the age distribution of the sample was roughly rectangular across the seven decades. The study was approved by The University of Texas at Dallas and The University of Texas Southwestern Medical Center institutional review boards, and all participants provided written informed consent in accord with the Helsinki declaration.

MRI Acquisition Protocol

A 3T Philips Achieva MRI scanner equipped with a 32-channel head coil was used to acquire diffusion-weighted images with the following parameters: 65 whole-brain (WB) axial slices in 30 diffusion-weighted directions

(b -value = 1000 s/mm²) with 1 non-diffusion weighted b_0 (0 s/mm²), voxel size $2 \times 2 \times 2.2$ mm³ (reconstructed to $0.875 \times 0.875 \times 2$ mm³), TR/TE = 5608 ms/51 ms, FOV = 224×224 , and matrix = 112×112 . A high-resolution T1-weighted MPRAGE sequence was also acquired on the same scanner with the following parameters: 160 sagittal slices, voxel size $1 \times 1 \times 1$ mm³, flip angle = 12 degrees, TR/TE = 8.3 ms/3.8 ms, FOV = $256 \times 204 \times 160$, and matrix = 256×256 .

Diffusion Image Processing and Tractography Protocol

DTIPrep v1.2.4 was utilized for processing and quality control of diffusion images (27) and to identify potential susceptibility or eddy current artifacts. Gradients with intensity distortions, as well as those of insufficient quality caused by participant head motion, were detected and removed from subsequent analyses using the default thresholds in DTIPrep, and remaining gradients were co-registered to the non-diffusion-weighted b_0 image. Diffusion directions were adjusted to account for independent rotations of any gradient relative to the original encoding direction (28). DSI studio (29) (software built on September 26, 2014; <http://dsi-studio.labsolver.org>) was used to calculate the diffusion tensors and FA at each voxel and to conduct deterministic tractography of the OR. To ensure standardization across the sample, regions of interest and avoidance (ROIs; ROAs) were delineated on either the 1 mm MNI template brain or by using the individual subject parcellations obtained through Freesurfer v5.3.0 (30) using the Desikan–Killany atlas (31). Regions were then warped to individual native subject diffusion space using a series of non-linear registrations

Table 1. Participant demographics and cognitive performance, by arbitrary age grouping

	Younger (20–34)	Middle (35–54)	Older (55–69)	Oldest (70–94)
	Mean (SD)	Mean (SD)	Mean (SD)	Mean (SD)
Demographics (N)	39	41	33	17
Sex (%F)	56%	54%	61%	71%
Education (years)	15.5 (2.22)	15.3 (2.52)	15.7 (2.56)	16.3 (2.82)
MMSE	29.2 (0.90)	29.3 (0.82)	28.9 (0.80)	28.8 (0.73)
CES-D	4.62 (3.75)	4.22 (4.10)	4.27 (3.71)	3.82 (3.32)
Cognitive Composite Scores				
Visual Processing	0.66 (0.73)	-0.09 (0.63)	-0.26 (0.59)	-0.79 (0.55)
Visual EF	0.33 (0.66)	0.12 (0.60)	-0.12 (0.67)	-0.81 (1.02)
Verbal EF	0.16 (0.74)	-0.007 (0.79)	-0.05 (0.68)	-0.25 (0.83)
Optic Radiations FA	0.498 (0.02)	0.487 (0.02)	0.482 (0.02)	0.480 (0.01)

Note: Age is arbitrarily broken into groups for table description purposes but was treated as a continuous variable in all analyses. Cognitive composite scores are coded such that higher values represent better performance and/or higher executive functioning. SD, standard deviation; MMSE, Mini-Mental State Exam; CES-D, Center for Epidemiological Studies – Depression Scale; EF, executive function; FA, fractional anisotropy.

ORIGINAL RESEARCH ARTICLE

that were calculated and applied using the Advanced Normalization Tools (ANTs) software package (32). ROIs included the left and right thalamus proper from Freesurfer segmentation, which was expanded to identify the white matter specific to the lateral geniculate nucleus (LGN), manually identified using the guidelines provided by Benjamin et al. (33). Additionally, the calcarine sulcus was identified to extend tracking into the primary visual cortex (see Figure 1). The ROAs included a mid-sagittal plane so that tracking could be isolated to each hemisphere, and ROA planes located anterior ($y = -2$) and posterior/dorsal ($y = -40$) to the thalamus to exclude anterior/superior thalamic radiation projections or posterior thalamic radiation projections into parietal sensory association areas, respectively. Additional ROAs included the brainstem and cerebellum to prevent inferior projections. The following parameters were used in the deterministic tracking algorithm: maximum turning angle = 75 degrees, step size = 1 mm, minimum/maximum length = 20/500 mm, and FA threshold = 0.20. Topology-informed pruning was used with 16 iterations to minimize wayward streamlines (34). Participants were required to have a minimum of 200 (1.25 SD from the mean) optic radiation streamlines across hemispheres. Lastly, mean FA (a scalar value ranging from 0 to 1) in the OR tract was calculated within hemisphere and then averaged across both hemispheres to obtain one mean OR FA value per participant. Mean global white matter FA (averaged from all white matter voxels in the brain) was also calculated to serve as a control variable in statistical models to account for any general influence of white matter FA on cognitive performance measures.

Cognitive Measures

Three cognitive composites were created by averaging performance on cognitive tasks that reflect cognitive functions involving visual processing speed, visual EF, and verbal EF (detailed next). Performance on each cognitive task was coded so that higher scores reflected better performance (i.e., visual EF scores were multiplied by -1 to be reverse-coded), then unit-weighted composite z-scores were computed for each cognitive domain. All composites demonstrated a Cronbach's $\alpha > 0.85$.

Visual Processing Speed

The visual processing speed composite was constructed from the Pattern Comparison Test and Letter Comparison Test, both of which require participants to make rapid judgments about whether or not two sets of stimuli are the same (35), as well as the Digit-Symbol Coding subtest of the Wechsler Adult Intelligence Scale (WAIS) (36), in which participants indicate associations between symbols and numbers as quickly as possible. All tasks capture aspects of visual processing speed,

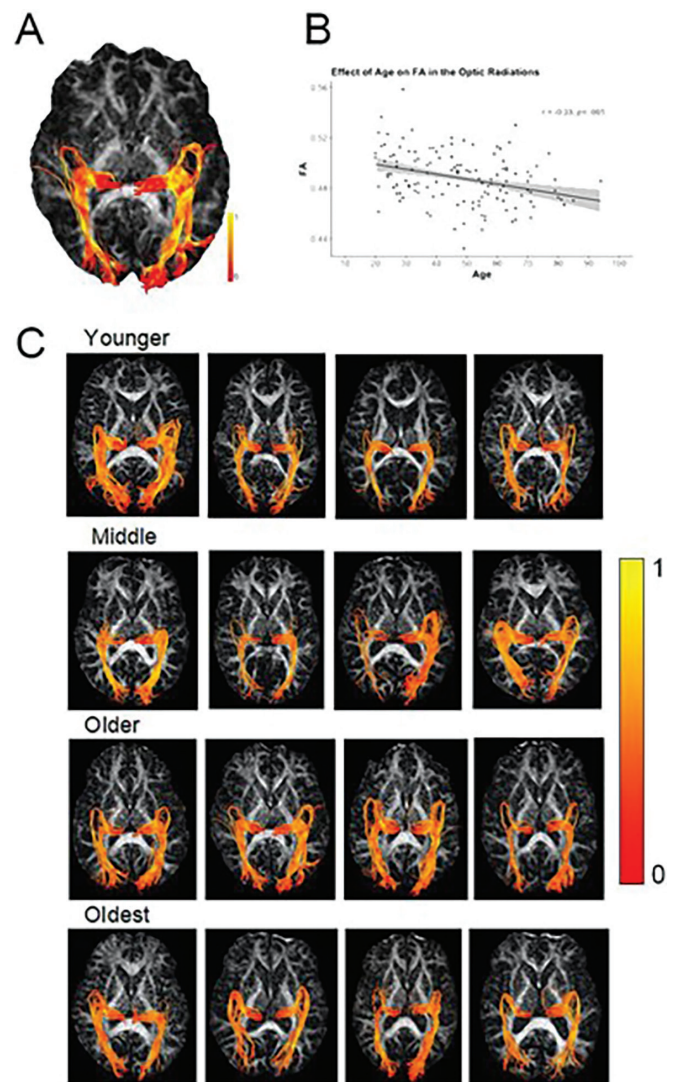


Fig. 1. (A) Axial view of the optic radiations (OR) tractography on a representative middle-aged participant's fractional anisotropy (FA) map. Fibers extend from the lateral geniculate nucleus of the thalamus to the calcarine sulcus (V1 region). Meyer's loop through the temporal cortex can also be seen. (B) The scatterplot depicts the negative correlation between age and FA in the OR as well as illustrates the roughly equal distribution of participants across the adult age span in this sample. Panel (C) illustrates four random participants corresponding to each of the four lifespan "epochs" listed in Table 1. Heat gradient represents lower (red) to higher (yellow) FA values.

short-term visual memory, and visual-motor coordination. Performance on the Pattern and Letter Comparison tests (Parts 1 and 2) was calculated as the number of correct trials completed in 30 seconds for each part. Performance on the Digit-Symbol Coding test was calculated as the total number of correct trials completed in 120 seconds.

Visual Executive Function

The visual executive function composite was created from the Color-Word Interference (Stroop) tests and the Trail Making Test as implemented in the Delis-Kaplan Executive Function System (D-KEFS) (37). The

Color-Word Interference test involves color and word naming, inhibition, and cognitive switching conditions, and performance is measured as the total time taken (in seconds) to complete each condition. The Trails test involves visual scanning, number and letter sequencing, and cognitive switching conditions, and performance was measured as the total time taken (in seconds) to complete each condition. Scores on the visual EF tasks were reverse coded so that higher scores reflect better EF.

Verbal Executive Function

The verbal executive function composite was formed from the D-KEFS Verbal Fluency test, which assesses an individual's ability to generate words fluently in effortful, phonemic format, from general categories, as well as a condition involving shifting between categories. Performance was measured as the total number of words correctly produced in each condition (including F, A, S, Animals, Boys, and switching conditions) corrected for any set loss or repetition errors. Thus, the verbal EF composite was constructed of six verbal fluency subtest scores.

Statistical Analysis Approach

A linear regression was used to evaluate the effect of age on OR FA. Linear mixed-effects models were conducted to estimate whether age and OR FA are differentially related to performance on the visual and verbal cognitive measures. Specifically, a model including between-subjects fixed effects of continuous FA and continuous age, a within-subject fixed effect of cognitive domain (visual processing speed, visual EF, verbal EF), and a random intercept on the participant, as well as interactions between FA, age, and cognitive domain, was estimated predicting cognitive performance. Modeling both within- and between-subject effects in this way allows for the proper estimation of standard errors when observations are not independent (e.g., cognitive performance across domains within an individual). To account for potential sex differences and effects of education on the measures of cognition, the model also included covariates of sex and education. To mitigate the likelihood that effects were representative of general white matter effects, the model additionally included a covariate representing global, or WB FA. Interactions between all covariates and the within-subject fixed effect of cognitive domain were also included. All analyses were conducted using the "lm" and "lmer" functions implemented in R statistical software program (38), and in all models, continuous variables were mean-centered to minimize multicollinearity. Significant interaction terms between continuous variables were followed-up with simple slopes

analyses using the Johnson–Neyman procedure (39) on estimates from the mixed-effects models using the "interactions" package in R. This procedure allows for estimation of regions of significance of the effect of the independent variable on the dependent variable across values of the continuous moderator (40,41). In the current context, it allows for the pinpointing of when in the age span FA in the OR is significantly related to cognitive performance within each domain (i.e., at what value of age in years is the slope of the FA-cognition association significant and/or insignificant).

RESULTS

Effect of Age on Optic Radiations

There was a significant negative effect of age on white matter FA in the optic radiations, where, as age increased FA decreased linearly [$F(1,128) = 15.54, p < .001$; see Figure 1B].

Age-related Effect of Optic Radiations on Cognitive Measures

Linear mixed-effects models were conducted to determine differential age effects of OR FA on performance across the cognitive domains. A conditional effect of age on cognitive performance was observed [$F(1,123) = 36.48, p < .001$] with performance decreasing with increasing age. There was also a significant age by cognitive domain interaction on performance [$F(2,246) = 16.98, p < .001$]; however, this was qualified by the presence of a three-way interaction among age, OR FA, and cognitive domain [$F(2,246) = 3.30, p < .05$]. No other model effects were significant ($p > .09$). Decomposition of the three-way interaction indicated that there was a significant difference in how aging influences the FA-visual EF association versus how it influences the FA-verbal processing association [Est(SE) = $-0.45(0.19)$, $t(246) = -2.36$, $p < .05$; $b = -.45$ (95% CI: $[-0.764, -0.136]$, SE = 0.19, $t(246) = -2.36$] and FA-verbal EF association [Est(SE) = $-0.39(0.19)$, $t(246) = -2.05$, $p < .05$; $b = -.39$ (95% CI: $[-0.704, -0.076]$, SE = 0.19, $t(246) = -2.05$]. No significant difference in age moderation of the FA-visual processing versus FA-verbal EF associations were detected [Est(SE) = $0.06(0.19)$, $t(246) = 0.32, p = .75$]. Simple slopes analyses, which allow the assessment of the nature of the association between FA and cognition at varying points in the age span, indicated that higher FA in the optic radiations was significantly associated with better performance on visual EF tasks in older age (beginning at about age 58; Figure 2). While the analysis of the simple slope suggests that this age

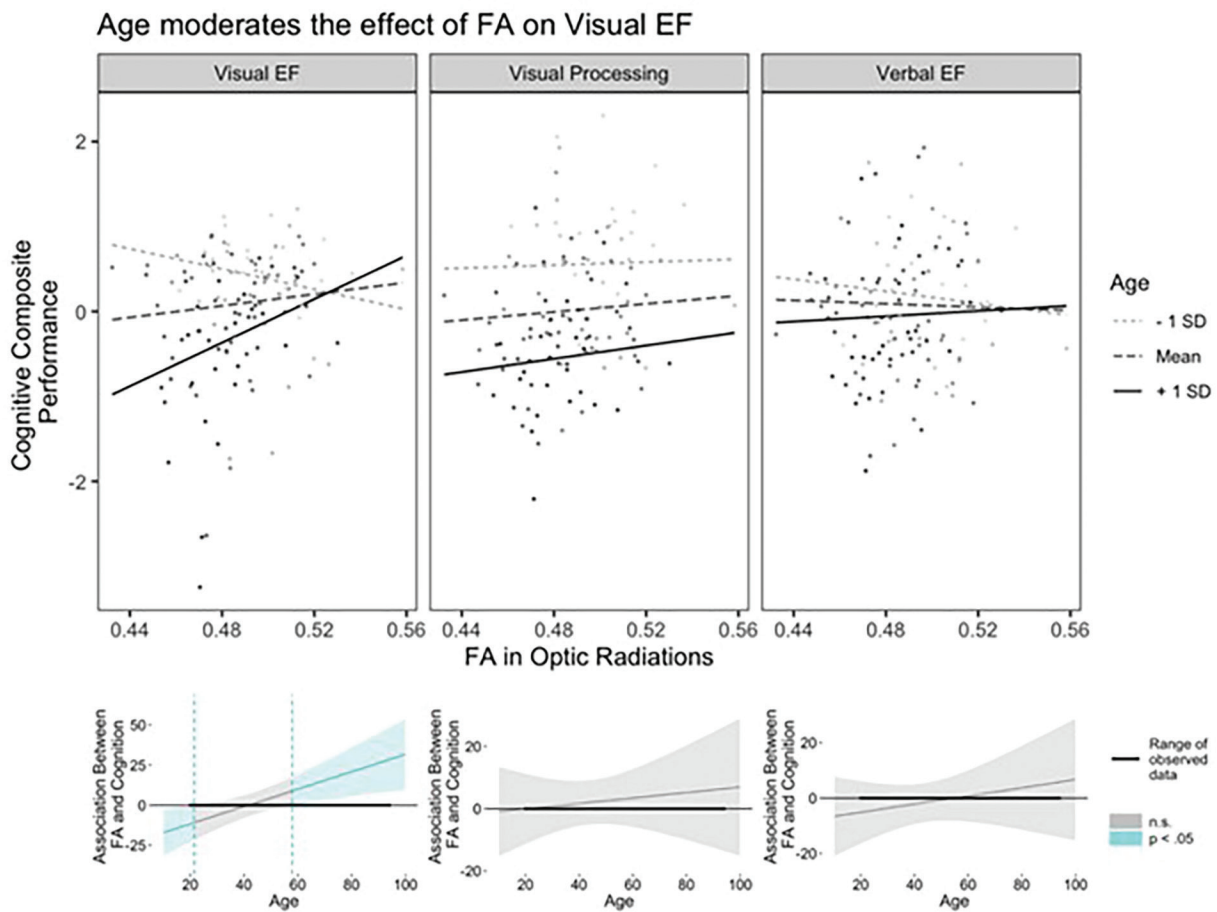


Fig. 2. Age moderates the association between fractional anisotropy (FA) in the optic radiations (OR) and cognitive performance differentially across domain. For visual executive function (EF), higher FA in the OR is associated with better EF only in older age (from about age 58 onward), while there was no significant differential association between FA and visual processing or verbal EF across age. In the top set of graphs, slopes are depicted at -1 standard deviation (SD), mean, and $+1$ SD of age (age 30, 48, 65, respectively). The FA-visual EF performance association is significant for $+1$ SD of age ($t = 2.36, p < .05$), but non-significant (n.s.) at -1 SD ($t = -1.36, p = .17$) and at the mean of age ($t = 0.93, p = .35$). Individual data points depict observed data. The bottom set of graphs depict regions of significance plots for each cognitive domain indicating at what values of age the association between FA in the OR and cognition is significant (blue shaded regions) and non-significant (gray shaded regions); left: visual EF, middle: visual processing speed, right: verbal EF.

association flips in direction prior to about age 21, this approaches the boundary of the lower range of age in our data and thus is less reliable and will not be further discussed. Further research including individuals earlier in the age span, such as adolescents, is needed to investigate whether there are different developmental trends in the association between visual white matter microstructure and higher-order cognition. Importantly, simple slopes analyses indicated no significant association between OR FA and performance on the visual processing or verbal EF tasks at any point in the age span, demonstrating cognitive domain specificity.¹

In terms of specificity of white matter tract (i.e., optic radiations) to the cognitive findings, note that in the model results the effects of OR are above and beyond

the effects of general white matter FA in the WB, and there was no significant effect of WB FA. As an additional approach to testing the specificity of the OR effect on white matter, we ran an additional model where instead of WB FA as the control covariate, the corticospinal tract (CST) FA was included, as it would not be hypothesized that this motoric projection fiber tract would be associated with the cognitive measures. As expected, this model was almost unchanged from the model presented that used WB FA as a control (i.e., above and beyond any influence of CST FA, OR FA \times Age \times Domain interaction was still significant, $F(2, 246) = 3.61, p = .028$. Neither main effects nor interactions with CST FA approached statistical significance (p 's = .90, .63). As one final test of the specificity of OR FA on cognition, we also tested a model that contained CST FA instead of OR FA to see if CST alone predicted cognition. As expected, there were no significant effects of CST in this model either (p 's = .58 to .84).

¹ Our *a priori* metric of interest was FA; however, we observed a similar interaction and interaction breakdown effect for Visual EF when other diffusion metrics were considered (i.e., for MD and RD but not AD).

DISCUSSION

The present study utilized deterministic tractography to isolate the optic radiations, posterior white matter tracts essential for the transmission of visual-sensory information, in a large lifespan sample of healthy adults. The visual cortex, along with other sensory gray matter regions, appears to be relatively resistant to the effects of aging compared to other brain regions (e.g., 40,42), yet to date, sparse research on aging of white matter projection tracts innervating the visual cortex is available. Here, we demonstrate that FA in the OR decreases linearly across the lifespan, contributing novel evidence to current literature showing age-related degradation of major association and commissural white matter tracts in normative aging. These age differences in FA were related to individual variation in cognition differentially across visual and verbal cognitive domains. While FA was unrelated to performance on a visual processing speed composite or to verbal fluency, age-related degradation of white matter in the OR was associated with poorer performance on tasks measuring visual executive functioning. Results contribute to the extant literature by characterizing age-related differences in microstructural properties of the OR and demonstrating the effects of diminished visual white matter on executive function in healthy cognitive aging.

Age Effects on Optic Radiation White Matter

A wealth of previous research indicates that white matter connectivity throughout the brain decreases with aging, with regional variation in the strength of the age association (13–16). Posterior white matter, especially in the occipital lobe, displays earlier maturation and declines at a later age compared to frontal areas, exhibiting a reversal of developmental myelin maturation (2,17,43). However, there has been a lack of studies specifically illustrating the extent of aging of OR white matter. Those that have included visual white matter have utilized ROI-based or voxelwise approaches, making it difficult to delineate age effects on specific white matter bundles of the visual system. Here, we utilized a deterministic tractography approach to isolate the OR projection tracts and examine age differences across the adult lifespan. Results indicated that OR white matter FA decreased linearly across the age span, consistent with previous research detailing age trends of white matter tract FA throughout the brain (11,44). While FA is an indirect measure of white matter health and the exact property of white matter it captures is debated (45), age-related degradation of FA is generally thought to reflect degeneration of myelinated fibers in white matter (46). Our results suggest that white matter FA in the OR is susceptible to age-related alteration in microstructural organization, exhibiting a linear decrease across the lifespan. Future studies including longitudinal measures of white matter microstructure of the OR are

required to determine the extent to which OR white matter properties change over time and to identify to what degree the magnitude and trajectory of age-related decline in the OR compares to that of other association and projection fibers.

Age-related Effect of OR White Matter on Cognition

The optic radiations act as a relay system connecting the lateral geniculate nuclei of the thalamus to primary visual cortices and facilitate processing and integration of sensory-perceptual information. Age-related degeneration of white matter in this region should consequently influence functional brain processes involving low-level information processing and/or higher-order cognitive domains. Our results indicate that aging of OR FA is associated with cognition differentially across visual and verbal aspects of cognition. Across the lifespan, OR FA showed little association with performance on tasks measuring the speed of visual information processing or with those assessing verbal EF. Instead, age moderation of the association between FA in the OR and visual EF was observed, with negative effects of decreased white matter on visual EF prevalent beginning in late-middle age and continuing into older age (at about age 60 and above). Thus, possessing more degraded OR white matter in older age is associated with exhibiting poorer performance on visual EF tasks, supporting existing theories of cortical disconnection and white matter degeneration in aging (1,2,3,44).

White matter FA has been previously linked with individual variation in performance on tasks assessing processing speed in aging populations (1,3,4,47). Several studies also report that white matter FA in the frontal and parietal cortices (e.g., genu and splenium), as well as WB FA, mediates age-related reductions in the speed of processing (9,48,49). In regard to the OR specifically, previous studies demonstrate that reductions in the structural properties of OR tracts are associated with decreased processing speed in children and younger adults (21–23); yet, another study found no association between any OR diffusion metric measured and simple decision/reaction time in younger adults (50). The association of the OR tract with processing speed or other higher-order cognitive functions, however, has not been thoroughly investigated in a healthy aging adult population. In the present study, FA in the OR was not associated with simple visual processing speed at any point in the age span, contrary to our initial predictions.

While one other study including both younger and older adult groups found that age-related decreases in OR FA were associated with slower processing speed (24), mediation analyses indicated that age accounted for the majority of the variance between FA and the speed measure, suggesting that any association between FA and processing speed may be a mere reflection of the

aging process. In the present study, when processing speed is considered independently in a separate linear model predicting OR FA, there is a significant positive association between speed and white matter FA; however, this association does not remain after accounting for effects of age and/or global FA on processing speed. Thus, together with our results, this evidence suggests that although the OR is thought to play an important role in the transfer of information from the visual cortices, OR white matter structure is not distinctly related to processing speed beyond the effect of age.

Instead, our results indicated that FA in the OR was associated with significantly poorer performance on EF tasks. This association was modality-specific, with an age-dependent FA effect exclusively observed for the visual, but not verbal EF composite. Notably, the positive association between OR FA and visual EF was evident only in the late middle to older age (greater than about age 60), supporting a white matter connection degeneration hypothesis of aging. Numerous studies have demonstrated that age-related decline in white matter microstructural organization is associated with EF across various association and projection white matter tracts (3). Despite this evidence, a dearth of research exists investigating how aging of posterior white matter that supports information relay in the visual system contributes to EF. In support of the present results, Kennedy and Raz (5) found that reduced FA in posterior white matter (specifically ROIs in parietal, splenium, and occipital white matter) was associated with poorer performance on visual EF tasks measuring inhibition (i.e., Stroop) and task switching. The present study contributes novel evidence specifically linking white matter microstructural properties of the OR to higher-order cognition. Critically, this OR structure–cognition association was observed after accounting for the general influence of white matter (i.e., global FA) on visual EF, providing evidence that individual white matter tracts contribute to complex visual cognition beyond a global effect of white matter health (24). Our results suggest that diminished white matter connectivity of the OR appears even during the course of healthy aging and is, in part, responsible for poorer visual executive performance that is characteristic of aging.

The fact that white matter in the OR had a specific age-dependent effect on visual, but not verbal EF, is in line with its established role in supporting the transfer of visual information from the lateral geniculate nucleus (originating from the retina) to the visual cortex. This dissociation extends previous structure–function studies that often combine visual and verbal EF measures, making it difficult to distinguish the relative influence of white matter degradation on age-related variation in executive performance between domains. Future research should evaluate how aging of different white matter tracts differentially relates to unique components of EF and other cognitive processes, such as working memory. While it

was expected that FA in the OR would also be related to the speed of visual information processing, it may be the case that the synchronization required for higher-order visual functioning is impacted first by OR degradation, and performance on speeded tasks is not linked to FA in the OR until later in the aging or disease process. Testing this hypothesis, however, requires longitudinal measurement of the rate of change in structure–function associations, currently underway in our lab. Alternatively, age-related degradation of white matter may influence the speed of information processing in a more global manner and may not be isolated to particular association or projection tracts. Regardless, the present results suggest that OR white matter microstructure is involved in facilitating aspects of higher-order functions that rely on visual information (e.g., cognitive switching, visual-motor sequencing), rather than simply being a visual sensation and perception relay tract, and that age-related degradation of this white matter system is accompanied by poorer visual cognition.

Results from this study should be considered in light of various strengths and limitations. Inclusion of a sample spanning the adult lifespan, as opposed to younger and older age groups, allows for the investigation of continuous age-related trends in how white matter microstructure is associated with individual differences in cognition across domains. Utilization of deterministic tractography to isolate individual OR white matter tracts as opposed to sampling from regions of interest placed within a portion of the OR, or measuring only a subsection of the OR through voxel-wise approaches, allows for a better representation of OR microstructural properties (51,52). Through a mixed-model approach, we were also able to simultaneously compare the relative association between age-related alterations in OR white matter and performance across several cognitive domains versus examining these associations independently. Relatedly, while a strength of the present study was the inclusion of multiple measures of cognition in each domain, additional research using alternative speed measures could potentially show an association between FA in the OR and processing speed akin to that seen in other association white matter tracts. As with any study quantifying properties of white matter, FA represents a sensitive, albeit non-specific measurement of white matter properties, and the true biological processes of white matter that it characterizes is a topic of continued investigation. In addition, the health of white matter is only one biological property that differs across age, and it is likely that a multitude of factors (e.g., cortical thickness, gray matter volume, brain iron, or beta-amyloid levels) contribute to age-related decline in cognition. Longitudinal data using multimodal neuroimaging methods are necessary to quantify individual age-related changes in OR white matter degradation, as well as to identify associations between micro- and macrostructural properties and cognitive performance across time.

Overall, the present study demonstrates that degraded white matter connections between thalamic regions and visual cortices occur in a linear fashion across the lifespan. This weakened microstructure of the optic radiations is also linked to poorer cognitive performance, demonstrating the greatest effect on visual components of executive functioning in advanced age. Results extend the limited previous work characterizing structure–function associations to the posterior white matter of the visual relay system and lend further support to theories suggesting that cortical disconnection contributes to declines in cognition observed in normal aging.

Funding

This research was supported in part by NIH grants R00 AG-036818, R00 AG-036848, and R01 AG-056535 awarded to KMK and KMR.

Disclosures

The authors have no disclosures or competing interests to declare.

Data availability statement

The data and relevant analysis code will be made publicly available via the Open Science Framework upon publication at <https://osf.io/j7sr2/>.

References

- O'Sullivan M, Jones DK, Summers PE, Morris RG, Williams SCR, Markus HS. Evidence for cortical "disconnection" as a mechanism of age-related cognitive decline. *Neurology* [Internet]. 2001 Aug 28;57(4):632–8. Available from: <http://www.neurology.org/cgi/doi/10.1212/WNL.57.4.632>
- Bartzokis G. Age-related myelin breakdown: A developmental model of cognitive decline and Alzheimer's disease. *Neurobiol Aging* [Internet]. 2004 Jan;25(1):5–18. Available from: <http://linkinghub.elsevier.com/retrieve/pii/S0197458003001647>
- Bennett IJ, Madden DJ. Disconnected aging: Cerebral white matter integrity and age-related differences in cognition. *Neuroscience* [Internet]. 2014 Sep;276:187–205. Available from: <https://linkinghub.elsevier.com/retrieve/pii/S0306452213009731>
- Haász J, Westlye ET, Fjær S, Espeseth T, Lundervold A, Lundervold AJ. General fluid-type intelligence is related to indices of white matter structure in middle-aged and old adults. *Neuroimage* [Internet]. 2013 Dec;83:372–83. Available from: <https://linkinghub.elsevier.com/retrieve/pii/S1053811913006770>
- Kennedy KM, Raz N. Aging white matter and cognition: Differential effects of regional variations in diffusion properties on memory, executive functions, and speed. *Neuropsychologia* [Internet]. 2009 Feb;47(3):916–27. Available from: <https://linkinghub.elsevier.com/retrieve/pii/S0028393209000074>
- Webb CE, Rodrigue KM, Hoagey DA, Foster CM, Kennedy KM. Contributions of white matter connectivity and BOLD modulation to cognitive aging: A lifespan structure–function association study. *Cereb Cortex* [Internet]. 2020 Mar 14;30(3):1649–61. Available from: <https://academic.oup.com/cercor/advance-article/doi/10.1093/cercor/bhz193/5584926>
- Sullivan EV, Rohlfing T, Pfefferbaum A. Quantitative fiber tracking of lateral and interhemispheric white matter systems in normal aging: Relations to timed performance. *Neurobiol Aging* [Internet]. 2010 Mar;31(3):464–81. Available from: <https://linkinghub.elsevier.com/retrieve/pii/S0197458008001322>
- Penke L, Maniega SM, Murray C, Gow AJ, Valdes Hernandez MC, Clayden JD, et al. A General factor of brain white matter integrity predicts information processing speed in healthy older people. *J Neurosci* [Internet]. 2010 Jun 2;30(22):7569–74. Available from: <http://www.jneurosci.org/cgi/doi/10.1523/JNEUROSCI.1553-10.2010>
- Borghesani PR, Madhyastha TM, Aylward EH, Reiter MA, Swamy BR, Warner Schae K, et al. The association between higher order abilities, processing speed, and age are variably mediated by white matter integrity during typical aging. *Neuropsychologia* [Internet]. 2013 Jul;51(8):1435–44. Available from: <https://linkinghub.elsevier.com/retrieve/pii/S0028393213000778>
- Webb CE, Hoagey DA, Rodrigue KM, Kennedy KM. Frontostriatal white matter connectivity: Age differences and associations with cognition and BOLD modulation. *Neurobiol Aging* [Internet]. 2020 Oct;94:154–63. Available from: <https://linkinghub.elsevier.com/retrieve/pii/S0197458020301834>
- Madden DJ, Bennett IJ, Burzynska A, Potter GG, Chen N, Song AW. Diffusion tensor imaging of cerebral white matter integrity in cognitive aging. *Biochim Biophys Acta Mol Basis Dis* [Internet]. 2012 Mar;1822(3):386–400. Available from: <https://linkinghub.elsevier.com/retrieve/pii/S0925443911001736>
- Gold BT, Powell DK, Xuan L, Jicha GA, Smith CD. Age-related slowing of task switching is associated with decreased integrity of frontoparietal white matter. *Neurobiol Aging* [Internet]. 2010 Mar;31(3):512–22. Available from: <https://linkinghub.elsevier.com/retrieve/pii/S0197458008001292>
- Brickman AM, Meier IB, Korgaonkar MS, Provenzano FA, Grieve SM, Siedlecki KL, et al. Testing the white matter retrogenesis hypothesis of cognitive aging. *Neurobiol Aging* [Internet]. 2012 Aug;33(8):1699–715. Available from: <https://linkinghub.elsevier.com/retrieve/pii/S0197458011002077>
- Gunning-Dixon FM, Brickman AM, Cheng JC, Alexopoulos GS. Aging of cerebral white matter: A review of MRI findings. *Int J Geriatr Psychiatry* [Internet]. 2009 Feb;24(2):109–17. Available from: <http://doi.wiley.com/10.1002/gps.2087>
- Raz N, Rodrigue KM. Differential aging of the brain: Patterns, cognitive correlates and modifiers. *Neurosci Biobehav Rev* [Internet]. 2006 Jan;30(6):730–48. Available from: <https://linkinghub.elsevier.com/retrieve/pii/S0149763406000704>
- Salat DH, Tuch DS, Greve DN, van der Kouwe AJW, Hevelone ND, Zaleta AK, et al. Age-related alterations in white matter microstructure measured by diffusion tensor imaging. *Neurobiol Aging* [Internet]. 2005 Aug;26(8):1215–27. Available from: <https://linkinghub.elsevier.com/retrieve/pii/S0197458004003173>
- Westlye LT, Walhovd KB, Dale AM, Bjørnerud A, Due-Tønnessen P, Engvig A, et al. Life-span changes of the human brain white matter: Diffusion tensor imaging (DTI) and volumetry. *Cereb Cortex* [Internet]. 2010 Sep 1;20(9):2055–68. Available from: <https://academic.oup.com/cercor/article-lookup/doi/10.1093/cercor/bhp280>
- De Moraes CG. Anatomy of the visual pathways. *J Glaucoma* [Internet]. 2013;22:S2–7. Available from: <http://journals.lww.com/00061198-201306001-00004>
- Toosy AT, Ciccarelli O, Parker GJM, Wheeler-Kingshott CAM, Miller DH, Thompson AJ. Characterizing function–structure relationships in the human visual system with functional MRI and diffusion tensor imaging. *Neuroimage* [Internet]. 2004 Apr;21(4):1452–63. Available from: <https://linkinghub.elsevier.com/retrieve/pii/S1053811903007638>
- Yoshimine S, Ogawa S, Horiguchi H, Terao M, Miyazaki A, Matsumoto K, et al. Age-related macular degeneration affects the optic radiation white matter projecting to locations of retinal damage. *Brain Struct Funct* [Internet]. 2018 Nov 27;223(8):3889–900. Available from: <http://link.springer.com/10.1007/s00429-018-1702-5>
- Bells S, Lefebvre J, Prescott SA, Dockstader C, Bouffet E, Skocic J, et al. Changes in white matter microstructure impact cognition by disrupting the ability of neural assemblies to synchronize. *J Neurosci* [Internet]. 2017;37(34):8227–38. Available from: <http://www.ncbi.nlm.nih.gov/pubmed/28743724>
- Bells S, Lefebvre J, Longoni G, Narayanan S, Arnold DL, Yeh EA, et al. White matter plasticity and maturation in human cognition. *Glia* [Internet]. 2019 Nov 24;67(11):2020–37. Available from: <https://onlinelibrary.wiley.com/doi/abs/10.1002/glia.23661>
- Tuch DS, Salat DH, Wisco JJ, Zaleta AK, Hevelone ND, Rosas HD. Choice reaction time performance correlates with diffusion anisotropy in white matter pathways supporting visuospatial attention. *Proc Natl Acad Sci* [Internet]. 2005 Aug 23;102(34):12212–7. Available from: <http://www.pnas.org/cgi/doi/10.1073/pnas.0407259102>

ORIGINAL RESEARCH ARTICLE

24. Johnson MA, Diaz MT, Madden DJ. Global versus tract-specific components of cerebral white matter integrity: Relation to adult age and perceptual-motor speed. *Brain Struct Funct* [Internet]. 2015 Sep 28;220(5):2705–20. Available from: <http://www.ncbi.nlm.nih.gov/pubmed/24972959>
25. Folstein MF, Folstein SE, McHugh PR. "Mini-mental state." *J Psychiatr Res* [Internet]. 1975 Nov;12(3):189–98. Available from: <http://linkinghub.elsevier.com/retrieve/pii/0022395675900266>
26. Radloff LS. The CES-D Scale. *Appl Psychol Meas* [Internet]. 1977 Jun 26;1(3):385–401. Available from: <http://journals.sagepub.com/doi/10.1177/014662167700100306>
27. Oguz I, Farzinfar M, Matsui J, Budin F, Liu Z, Gerig G, et al. DTIPrep: Quality control of diffusion-weighted images. *Front Neuroinform* [Internet]. 2014;8:4. Available from: <http://journal.frontiersin.org/article/10.3389/fninf.2014.00004/abstract>
28. Leemans A, Jones DK. The B-matrix must be rotated when correcting for subject motion in DTI data. *Magn Reson Med* [Internet]. 2009 Jun;61(6):1336–49. Available from: <http://doi.wiley.com/10.1002/mrm.21890>
29. Yeh F-C, Verstynen TD, Wang Y, Fernández-Miranda JC, Tseng W-YI. Deterministic Diffusion fiber tracking improved by quantitative anisotropy. *PLoS One* [Internet]. 2013 Nov 15;8(11):e80713. Available from: <https://dx.plos.org/10.1371/journal.pone.0080713>
30. Fischl B. FreeSurfer. *Neuroimage* [Internet]. 2012 Aug;62(2):774–81. Available from: <https://linkinghub.elsevier.com/retrieve/pii/S1053811912000389>
31. Desikan RS, Ségonne F, Fischl B, Quinn BT, Dickerson BC, Blacker D, et al. An automated labeling system for subdividing the human cerebral cortex on MRI scans into gyral based regions of interest. *Neuroimage* [Internet]. 2006 Jul;31(3):968–80. Available from: <https://linkinghub.elsevier.com/retrieve/pii/S1053811906000437>
32. Avants BB, Tustison N, Song G. Advanced normalization tools (ANTS). *Insight J* [Internet]. 2009;2(365):1–35.
33. Benjamin CFA, Singh JM, Prabhu SP, Warfield SK. Optimization of tractography of the optic radiations. *Hum Brain Mapp* [Internet]. 2014 Feb;35(2):683–97. Available from: <http://www.ncbi.nlm.nih.gov/pubmed/23225566>
34. Yeh FC, Panesar S, Barrios J, Fernandes D, Abhinav K, Meola A, Fernandez-Miranda JC. Automatic removal of false connections in diffusion MRI tractography using topology-informed pruning (TIP). *Neurotherapeutics* [Internet]. 2019;16(1):52–8. Available from: <https://link.springer.com/article/10.1007/s13311-018-0663-y>
35. Salthouse TA. Speed and knowledge as determinants of adult age differences in verbal tasks. *J Gerontol* [Internet]. 1993;48(1):P29–36. Available from: <https://academic.oup.com/geronj/article-abstract/48/1/P29/557558>
36. Wechsler D. Wechsler Adult Intelligence Scale (WAIS-3R). *Psychol Corp.* 1997.
37. Delis DC, Kaplan E, Kramer JH. Delis-Kaplan Executive Function System. San Antonio, TX Psychol Corp; 2001.
38. R Core Team. R: A Language and Environment for Statistical Computing [Internet]. R Foundation for Statistical Computing. Vienna, Austria; 2018. Available from: <https://www.r-project.org/>
39. Johnson PO, Fay LC. The Johnson-Neyman technique, its theory and application. *Psychometrika* [Internet]. 1950 Dec;15(4):349–67. Available from: <http://link.springer.com/10.1007/BF02288864>
40. Preacher KJ, Curran PJ, Bauer DJ. Computational tools for probing interactions in multiple linear regression, multilevel modeling, and latent curve analysis. *J Educ Behav Stat* [Internet]. 2006 Dec 4;31(4):437–48. Available from: <http://journals.sagepub.com/doi/10.3102/10769986031004437>
41. Aiken LS, West SG. *Multiple Regression: Testing and Interpreting Interactions*. Sage Publications, Inc.; 1991.
42. Raz N, Lindenberger U, Rodrigue KM, Kennedy KM, Head D, Williamson A, et al. Regional brain changes in aging healthy adults: General trends, individual differences and modifiers. *Cereb Cortex* [Internet]. 2005 Nov 1;15(11):1676–89. Available from: <http://academic.oup.com/cercor/article/15/11/1676/296890/Regional-Brain-Changes-in-Aging-Healthy-Adults>
43. Lebel C, Gee M, Camicioli R, Wieler M, Martin W, Beaulieu C. Diffusion tensor imaging of white matter tract evolution over the lifespan. *Neuroimage* [Internet]. 2012 Mar;60(1):340–52. Available from: <https://linkinghub.elsevier.com/retrieve/pii/S1053811911013760>
44. Kennedy KM, Raz N. Normal aging of the brain. In: *Brain Mapping: An Encyclopedic Reference* [Internet]. Elsevier; 2015. p. 603–17. Available from: <https://linkinghub.elsevier.com/retrieve/pii/B9780123970251000683>
45. Jones DK, Knösche TR, Turner R. White matter integrity, fiber count, and other fallacies: The do's and don'ts of diffusion MRI. *Neuroimage* [Internet]. 2013 Jun;73:239–54. Available from: <https://linkinghub.elsevier.com/retrieve/pii/S1053811912007306>
46. Scheltens P, Barkhof F, Leys D, Wolters EC, Ravid R, Kamphorst W. Histopathologic correlates of white matter changes on MRI in Alzheimer's disease and normal aging. *Neurology* [Internet]. 1995 May 1;45(5):883–8. Available from: <http://www.neurology.org/cgi/doi/10.1212/WNL.45.5.883>
47. Bendlin BB, Fitzgerald ME, Ries ML, Xu G, Kastman EK, Thiel BW, et al. White matter in aging and cognition: A cross-sectional study of microstructure in adults aged eighteen to eighty-three. *Dev Neuropsychol* [Internet]. 2010 May 5;35(3):257–77. Available from: <http://www.tandfonline.com/doi/abs/10.1080/87565641003696775>
48. Madden DJ, Spaniol J, Costello MC, Bucur B, White LE, Cabeza R, et al. Cerebral white matter integrity mediates adult age differences in cognitive performance. *J Cogn Neurosci* [Internet]. 2009 Feb;21(2):289–302. Available from: <http://www.mitpressjournals.org/doi/10.1162/jocn.2009.21047>
49. Salami A, Eriksson J, Nilsson L-G, Nyberg L. Age-related white matter microstructural differences partly mediate age-related decline in processing speed but not cognition. *Biochim Biophys Acta Mol Basis Dis* [Internet]. 2012 Mar;1822(3):408–15. Available from: <https://linkinghub.elsevier.com/retrieve/pii/S0925443911001967>
50. Karahan E, Costigan AG, Graham KS, Lawrence AD, Zhang J. Cognitive and white-matter compartment models reveal selective relations between corticospinal tract microstructure and simple reaction time. *J Neurosci* [Internet]. 2019 Jul 24;39(30):5910–21. Available from: <http://www.jneurosci.org/lookup/doi/10.1523/JNEUROSCI.2954-18.2019>
51. Alexander AL. Deterministic white matter tractography. In: *Diffusion MRI* [Internet]. Oxford University Press; 2010. p. 383–95. Available from: <http://oxfordmedicine.com/view/10.1093/med/9780195369779.001.0001/med-9780195369779-chapter-022>
52. Soares JM, Marques P, Alves V, Sousa N. A hitchhiker's guide to diffusion tensor imaging. *Front Neurosci* [Internet]. 2013;7:31. Available from: <http://journal.frontiersin.org/article/10.3389/fnins.2013.00031/abstract>